

TEKNOFLOR®

HIGH PERFORMANCE FLOORING



NO WAX
NO BUFF
EASY TO
CLEAN

CLASSIC CUT HPD™

COMMERCIAL LUXURY SHEET • HIGH PERFORMANCE DESIGN

CLASSIC LUXURY. DURABLE PERFORMANCE.

TEKNOFLOR® Classic Cut HPD™ combines exceptional beauty, durable performance and complementary design collections to create floors with maximum flexibility and dependability. **Classic Cut HPD** features a traditional linen design and can be used independently or blended with our many other **Teknoflor** collections to achieve unique, classic designs with creative flair. **Classic Cut HPD** resilient sheet flooring's no wax, no buff construction, along with a 12-Year Warranty, ensures that your floor is as durable as it is beautiful. For more information, contact your Teknoflor representative.



DESIGN

- Residential look and feel
- Innovative traditional/classic design
- Exciting palette featuring 14 designer colors

DURABLE AND EASY MAINTENANCE

- No sealers, finishes or spray-buffing needed; Easily cleaned by damp mopping or auto-scrubbing
- Unique highly durable embossed wear layer
- Maintenance savings result in investment payback in a few years

ENVIRONMENTALLY FRIENDLY

- No buff floors mean no bacteria, dust or wax particles are thrown into the air during cleaning
- No odors from floor finishes or strippers; no wax flushed into sewer system
- Complies with REACH requirements for Substances of Very High Concern
- Made with 100% Virgin Vinyl
- Floorscore Certified

SAFE

- ADA Compliant
- Meets fire test standards and is suitable for use in emergency exits and corridors
- Approved for emergency egress areas - NFPA 101 and NFPA 99

OVERALL THICKNESS

- 2.3 mm (0.091")

WARRANTY

- 12-year commercial warranty

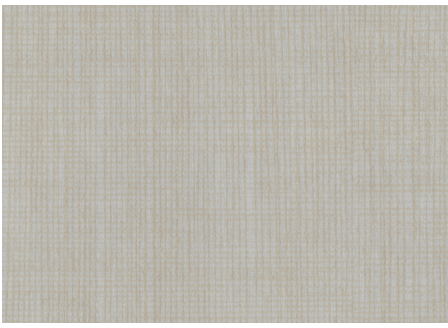
APPLICATIONS

- Ideal for Healthcare, Senior Living, Corporate/Office, Academic, Retail and Hospitality Environments

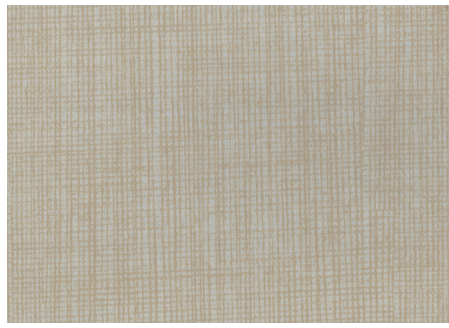


CLASSIC CUT HPD™
COMMERCIAL RESILIENT SHEET • HIGH PERFORMANCE DESIGN

TEKNOFLOR®



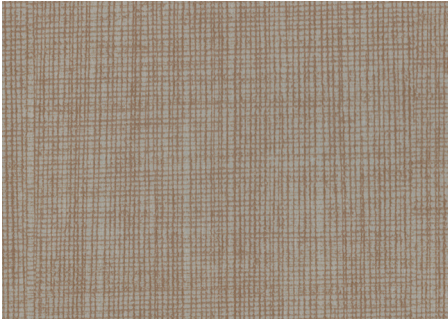
CC43101 Cashmere



CC43103 Chopsticks



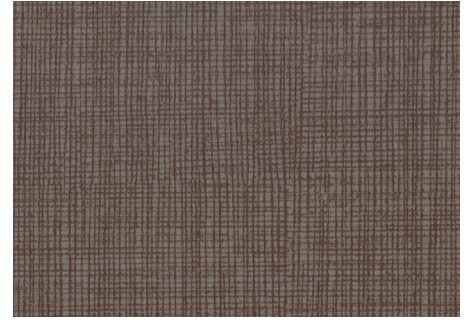
CC43108 Mink Muffs



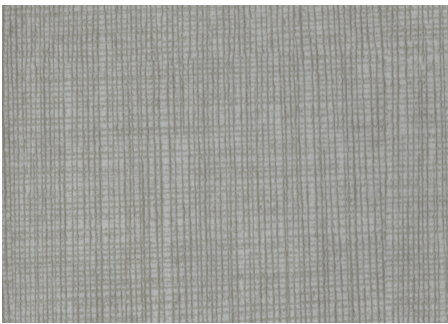
CC43104 Candied Walnut



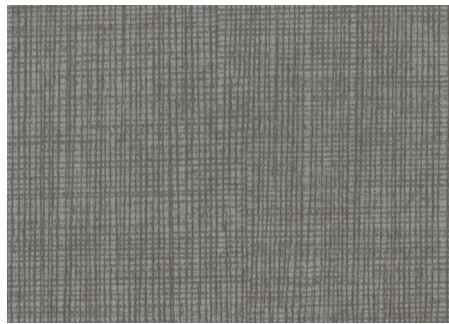
CC43105 Tweedy



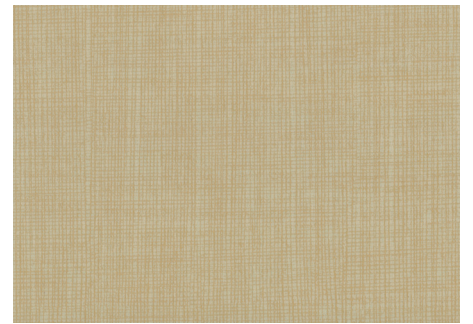
CC43106 Smarty Pants



CC43109 Linen Suit



CC43110 Smokin' Hot



CC43102 Smart Blonde



CC43114 Split Pea Soup



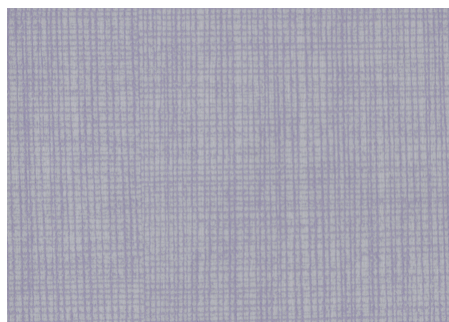
CC43113 Salt of the Earth



CC43111 Rain Dance



CC43112 Steel My Heart



CC43115 Sugar Plum

TEKNOFLOR® CLASSIC CUT HPD™

COMMERCIAL RESILIENT SHEET • HIGH PERFORMANCE DESIGN

PRODUCT DATA			
STANDARD SPECIFICATION	ASTM F1303 - Meets or exceeds requirements	DIMENSIONS	6' Wide (1.82m) x 75' Long (22.86m)
CLASSIFICATION	Type I, Grade 1	ROLL SIZE	50 SY
BACKING CLASS	Class B Fused Non-Cushioned	WEIGHT	320 lbs.
COMPOSITION	Virgin PVC, No outside recycled content and Phthalate Free	ROLLS / PALLET	12
TOP COAT	HP Urethane Coating with Ceramic Bead	PALLETS / CONTAINER	10
WEAR LAYER THICKNESS	0.50 mm (20 mils or 0.020 in)	WARRANTY	12-Year
OVERALL THICKNESS	2.3mm (0.091")		

PERFORMANCE SPECIFICATIONS	TEST METHOD	STANDARD REQUIREMENT	RESULT
CHEMICAL RESISTANCE	ASTM F925	0- No change or 1 - Slight Change	0 - No Change
HEAT STABILITY COLOR CHANGE	ASTM F1514	$\Delta E < 8.0$ avg. @ 7 days	Passes
LIGHT STABILITY COLOR CHANGE	ASTM F1515	$\Delta E < 8.0$ avg. @ 300 hrs.	Passes
SHORT TERM INDENTATION	ASTM F1914	Max. Residual Indent 0.012 in. @50 lbs.	0.006 in.
STATIC LOAD LIMIT	ASTM F970	250 psi \leq 0.005" Residual Indentation	Exceeds Requirements 1,000 psi at maximum limit
FLOORSCORE	Certified		SCS-FS-03202
HEAVY METALS	ASTM F963		No concern with Heavy Metals
ABRASION RESISTANCE	ASTM D4060	H18 Wheel & 1 kg mass applied	28,000 cycles to see effect on design layer
CASTOR CHAIR TEST	Castor Chair Test	198 lbs. Load 25,000 cycles / Rating Scale 1-5 5 - No Change / 1 - Severe Change	25,000 cycles 5 - No Change
REACH - SUBSTANCES OF VERY HIGH CONCERN (SVHC)	Test for EU REACH Chemicals of concern	SVHC's tested must be less than 0.1% by product weight	Passes

SAFETY PERFORMANCE	TEST METHOD	STANDARD REQUIREMENT	RESULT
STATIC COEFFICIENT OF FRICTION (SCOF)	D2047	≥ 0.5 SCOF Dry	≥ 0.6 SCOF
DYNAMIC COEFFICIENT OF FRICTION (DCOF)	ANSI B101.3	Low/Acceptable/High Traction - Wet DCOF	High Traction Wet DCOF
CRITICAL RADIANT FLUX	E648	Class I: ≥ 0.45 w/cm ² Class II: ≥ 0.22 w/cm ²	Class I
SMOKE GENERATION	E662	<450 Flaming	<450 Flaming & Non-Flaming
SURFACE BURNING CHARACTERISTICS	E84	Class A, B & C	Class B
APPROVED FOR EMERGENCY EGRESS AREAS - NFPA 101 AND NFPA 99			



Schedule
GS-27F-0504H • GS-27F-0036V
GS-27F-0015V

